

i.Share v1.0 Guide



The i.Share plug-in is a simple and powerful tool that allows you to quickly and easily export Adobe Photoshop images to the Club Photo website for immediate display.

Introduction

The Club Photo i.Share plug-in is likely to be the single most powerful asset in your collection of filters, actions, and assorted functions. That's because the i.Share plug-in allows you to reach more people, and display your work to anyone with an internet connection. So, no matter how many specialized, custom, super-filters you have, you are probably going to find that the i.Share plug-in is the most useful of the bunch.

Background

Reach beyond your desktop.
Share your work with the world without ever having to leave Photoshop.

Club Photo is a photo/image sharing web site with thousands of members. Anyone with an internet connection is able to quickly and easily share their photos by simply uploading them to <http://www.clubphoto.com>, where the membership is free of charge.

The artist/creator of the images is able to write captions for each image, and organize images into separate categories or virtual photo albums. All of the basic services and functions provided by Club Photo are free. Club Photo also offers personalized prints and gifts. We can, for example, put your images on coffee mugs, shirts, mouse pads, and even cookies (the edible kind).

Installation

1. Quit Adobe Photoshop.
2. Open the Photoshop folder.
3. Locate the "Plug Ins" folder.
4. Drag the i.Share plug-in into the Adobe Photoshop plug ins folder.

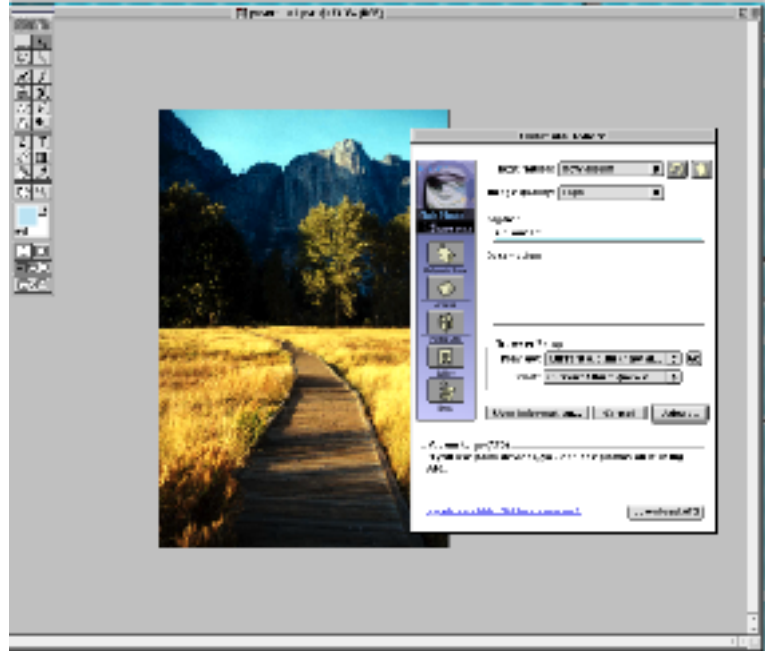
Note: the file may require that you either unzip or unstuff it, depending on which platform you are using, and how you have your computer configured. If you aren't sure, then simply double-click the downloaded file, and proceed with the extraction.

Using the i.Share plug-in

1. Open Adobe Photoshop.
2. Open an RGB image.

Note: *CMYK and LAB color spaces are not supported. Also: Make sure that your image is not larger than 8 Bits/Channel (look under the MODE menu).*

3. Pull down the FILE menu to EXPORT.
4. Select the Club Photo i.Share module from the list displayed to the right of the export option.



5. The first time that you use the plug-in, you'll be prompted to enter your membership information: your membership I.D., and membership password are required fields. **If you have already established an account at the Club Photo web site, you will have received an email containing the account numbers.** Use the numbers found in that email to activate the plug-in. You'll only have to do that once. If you have not created an account, go ahead and do that now. It only takes a couple of minutes, and it's free. Once you've signed-up, you'll be able to use the i.Share plug-in. To create a new membership, simply go to <http://www.clubphoto.com> If you have already downloaded the i.Share plug-in, you won't need to download any other software.

6. The top-most field in the i.Share plug-in is the DESTINATION field. For the purpose of becoming more familiar with this process, you'll want to click on the BOOK button to the right. You'll be prompted to enter the name of a NEW ALBUM into which you can upload images. Enter any name that you prefer, and click OK.

7. The button to the immediate left of the BOOK button is the REFRESH button. (It looks like a circular arrow). Go ahead and click once on that button. Your album list refreshes, in the same way that a web browser would refresh a page that's already been visited.

8. In the DESTINATION field, you should now be able to select the name of the album that you entered just a moment ago. Select that album name.

9. The next field allows you to select the IMAGE QUALITY. Choose a level of JPEG compression from the pop-up window. Remember: the higher the image quality, the longer the upload/download process will take. This can be an important factor for those with dial-up connections.

Note: *if you and all of your clients and friends have T1, Cable, or ADSL connections, then you may want to select MAXIMUM, as it ensures that best-looking images with the fewest "JPEG artifacts".*

10. The next field is for your CAPTION, where you'll want to enter a note, title or name for the image being displayed.

11. The DESCRIPTION field allows you to describe, in greater detail, the image. In general, you'll want to avoid being long-winded. This field allows you to provide important information for those viewing your images.

12. The PREVIEW field allows you to select which album page you would like to be taken to. Clicking once on this button (after having made a selection,) will activate your browser, and load the page that was chosen.

13. The PROOF field allows you to specify which page you would like to load (using your browser) after having uploaded an image. This field can be a powerful tool for managing a long list of images or albums. You may want to create a few different album pages, and practice the process of determining which images are sent to each page (by using the DESTINATION field), and which pages are displayed after you've uploaded any image.

14. The MEMBER INFO button below allows you to review or edit your membership information quickly. You can change passwords and membership I.D. numbers at any time by using this button.

15. The CANCEL button. . . . Guess what this one does.

16. Finally, the UPLOAD button allows you to actually send the image from Photoshop to the album that you've chosen. Click once on this button, and you'll see the file being sent off to your page(s) at www.clubphoto.com. Obviously, for this to happen, you'll have to be connected to the Internet via a dial-up, network, cable, xDSL, or other connection type.

Why is this plug-in so useful?

Club Photo has been a leader in the field of photo and image sharing for some time. One of the reasons that we have become the choice for so many designers and graphics professionals, is that we offer better tools and resources than are otherwise available. In short, we push-the-envelope.

And that's why we created the i.Share plug-in.

Basically, the strength of the plug-in is that it works "on top" of what you happen to be doing. So, imagine that you are creating an image in Photoshop. It's a big, fat, heavily-layered monster of a file. You've got alpha channels and masks and adjustment layers and it all adds up to a much-too-beefy-to-upload file size.

Under normal circumstances, displaying this file on the Internet is going to require a number of separate steps, including opening a dedicated FTP client to send the file. So, we found a much better way.

In a nutshell, you open an image, work on it, create layers, do whatever you want. When you feel like you want to share it, you export it to your page(s) at Club Photo, and anyone can view it instantly. It's that simple. The original is left intact. You haven't flattened anything. Your work is intact. The file that you export is just a JPEG copy of what you happen to be working on, and nothing is saved, so your hard drives won't fill up with your work. Ours will. But don't worry: we've got plenty of room.

After exporting the image, it's available for IMMEDIATE viewing by anyone with an Internet connection. Again, you have the ability to restrict access to your images by using a password (of your own creation.) To do that, you'll use the ALBUM MANAGER, which is an interactive portion of the Club Photo website. Simply go to www.clubphoto.com, and select "Album Manager".

The bottom line is that you now have a very powerful tool for communicating, showing comps, sharing ideas, or just showing off. You can create virtual galleries, portfolios, and photo albums. And it's not going to cost you a dime. The i.Share plug-in is free. Even the Club Photo membership is free.

So enjoy it. Share your work. Show off your amazing Photoshop talent or a collection of snapshots. You can create an album where you show your favorite images; or you can create an album that is dynamic, and becomes a part of your regular workflow. Or you can do both.

Frequently Asked Questions

Question: How much does a membership cost?

Answer: *The membership, the Living Album software, the plug-ins and services are all free of charge.*

Question: How long does it take to join?

Answer: *It takes just a couple of minutes to join Club Photo.*

Question: How do I join?

Answer: *Go to www.clubphoto.com, and join.*

Question: Can I prevent others from viewing my images?

Answer: *Yes. You can lock your web gallery with an optional password. Doing this allows you to restrict access to selected persons.*

Question: Is i.Share for entry-level users, or for content creators, Artists and Graphic designers?

Answer: *It's for anyone with a computer, an internet connection, and an interest in sharing images. Club Photo has always appealed to power-users because of the advanced imaging capabilities, while less practiced users appreciate the ease-of-use and simple interface.*

Question: I am a professional designer / artist, and I'd like to have a way of communicating with, and displaying work to my clients. Can I use Club Photo for that?

Answer: *Absolutely! That's one of the most popular uses for a Club Photo membership. We encourage you to use your account to communicate ideas, images and artwork in a way that helps you to become more productive, while dealing less with mundane details and boring hassles.*

Question: When I select the EXPORT menu, the ClubPhoto i.Share option is grayed- out. What's wrong?

Answer: *Your file is probably in a format other than RGB (red, green, blue). You'll want to go to the IMAGE menu, then the MODE sub-menu, and ensure that RGB COLOR has a checkbox to the immediate left.*

Question: When I pull down the FILE menu, the EXPORT option is grayed-out. What's wrong?

Answer: *You may have an image that's in 16 bit color. High-end scanners and other digital imaging devices can often allow you to import or acquire images at that "depth." We typically like to bring our images into Photoshop at the highest possible bit depth, and then make some adjustments using the LEVELS and CURVES functions. After that, we change the image (in the MODE menu) to 8 Bits/Channel. Then, Photoshop will give you back your filters, and other functions. You probably noted that while the image is in 16 Bits/Channel, Photoshop doesn't allow you to do a number of things (look at the FILTER menu.) If all of this sounds complicated, then just remember that you can always turn a 16-bit image into an 8-bit image (Image → Mode Menu).*

Question: Okay, but I just want to show some snapshots of my vacation in Maui. Is that okay?

Answer: *Go for it.*

Copyright © 1999 Club Photo, Inc. All rights reserved.

i.share is a trademark of Club Photo, Inc. Photoshop is a registered trademark of Adobe Systems, Inc. All other brand and product names are trademarks or registered trademarks of their respective holders.